

## Multiple Receptors as Targets of Cry Toxins in Mosquitoes<sup>†</sup>

Supaporn Likityivatanavong,<sup>§</sup> Jianwu Chen,<sup>§</sup> Amy M. Evans,<sup>§</sup> Alejandra Bravo,<sup>#</sup> Mario Soberon,<sup>#</sup> and Sarjeet S. Gill<sup>\*,§</sup>

<sup>§</sup>Department of Cell Biology and Neuroscience, University of California, Riverside, California 92521, United States

<sup>#</sup>Instituto de Biotecnología, Universidad Nacional Autónoma de México, Apartado Postal 510-3, Cuernavaca 62250, Morelos, Mexico

**ABSTRACT:** *Bacillus thuringiensis* (*Bt*) produces inclusions that are composed of proteins known as crystal proteins or Cry toxins. Due to their high specificity and their safety to humans and the environment, these Cry toxins are considered to be valuable alternatives to chemical pesticides in insect control programs. It is believed that Cry toxin-induced membrane pore formation is responsible for insect toxicity. The molecular mechanism of pore formation involves recognition and subsequent binding of the toxin to membrane receptors. This binding is accompanied by toxin oligomerization and transfer of domain I helices of the toxin to the lipid–water interface. This toxin insertion creates pores that lyse the cells. Several receptors from lepidopteran, coleopteran, and dipteran insects have been well characterized. This paper provides an overview of the understanding of the interactions between Cry toxin and multiple receptors in mosquitoes, in particular *Aedes aegypti* and reviews the manner by which the receptors were identified and characterized, with a focus on three proteins, cadherin, alkaline phosphatase, and aminopeptidase-N.

**KEYWORDS:** *Bacillus thuringiensis*, Cry toxins, aminopeptidase, cadherin, alkaline phosphatase, receptor, *Aedes aegypti*

### CRY TOXIN RECEPTORS

*Bacillus thuringiensis* (*Bt*) is a spore-forming pathogenic bacterium distinguished from other members of the *Bacillus* group by its production of crystalline inclusions known as Cry  $\delta$ -endotoxins. The insecticidal properties of *B. thuringiensis* have been exploited worldwide for the control of insect vectors of human diseases and insect pests in agriculture. Due to the high selectivity and effectiveness of these toxins, their use surged dramatically following the introduction of *cry* genes into plants known as Bt crops.<sup>1,2</sup> Consequently, it is important to elucidate their mode of action to ensure these toxins do not cause deleterious effects on human health and the environment.<sup>1,3</sup> Because *Aedes aegypti* is a principal mosquito vector of several diseases, including dengue and yellow fevers, this paper deals primarily with the mode of action of Cry toxins in this mosquito species.

Upon ingestion by a susceptible mosquito larva, the alkaline midgut environment promotes solubilization of crystalline inclusions releasing the protoxins. Subsequent cleavage by gut proteases results in the formation of active toxins. The activated toxin fragments then bind to specific protein receptors on midgut epithelial cells, leading to membrane insertion and pore formation. These pores allow ions and water to pass through the cells, resulting in swelling, lysis, and death of the insect.<sup>4–8</sup> In the case of lepidopteran insects, sequential binding of Cry1A toxins has been reported. The binding mechanism may initially involve aminopeptidase-N (APN) and alkaline phosphatase (ALP) receptors followed by binding to a cadherin protein. Interaction with the cadherin protein triggers cleavage of helix  $\alpha$ 1, leading to the formation of oligomeric toxins.<sup>9</sup> These oligomers then bind glycosylphosphatidylinositol (GPI)-anchored proteins in lipid rafts, including APN and ALP, resulting in the insertion of

oligomeric toxins into the cell membrane.<sup>10, 11</sup> An alternative model has been proposed that Cry1Ab toxins kill cells by a cascade of signal transduction events.<sup>12</sup> In this model, Cry1Ab first binds the cadherin receptor. This interaction then stimulates a G protein and an adenylyl cyclase, leading to an increase in cyclic AMP and protein kinase A levels, which subsequently leads to cellular alterations resulting in cell death. However, the preponderance of evidence supports the pore-forming model of toxicity.

In any case, specific receptors are necessary for Cry toxin action. Four different protein receptors have been identified in lepidopteran insects: cadherin,<sup>13–15</sup> APN,<sup>16, 17</sup> ALP,<sup>18</sup> and a 270 kDa glycoconjugate.<sup>19</sup> In addition, glycolipids have been implicated.<sup>20</sup> In mosquitoes, besides cadherin, APN, and ALP proteins, an  $\alpha$ -amylase has been identified as a novel receptor in *Anopheles albimanus*, one of the malarial disease vectors.<sup>21</sup>

Receptor expression levels have been shown to correlate with Cry toxin activity. For example, in *Manduca sexta*, the three identified protein receptors are expressed in the anterior, middle, and posterior regions of the midgut.<sup>22</sup> These same regions also bind the Cry1A toxins.<sup>23</sup> However, whereas the cadherin receptor protein was observed in all three regions, both the APN and ALP proteins were detected primarily in the posterior midgut. ALP was found at higher levels in the first and second larval instars, whereas APN was the main GPI-anchored Cry1Ab binding protein in the fourth and fifth instars.<sup>10</sup> It appears that in early instars ALP plays a more important role in toxicity than APN proteins. Potentially these differences in expression

**Special Issue:** Casida Symposium

**Received:** September 17, 2010

**Revised:** November 8, 2010

**Accepted:** November 12, 2010

**Published:** January 06, 2011

<sup>†</sup> Part of the Symposium on Pesticide Toxicology in Honor of Professor John Casida. S.S.G. was a Ph.D. student with Dr. Casida 1969–1973.

patterns could explain the decreased susceptibility of late *M. sexta* larval instars to Cry1Ab.<sup>10</sup> In addition, it has been reported that the presence of APN activity was not directly correlated with toxin binding.<sup>24</sup> Moreover, no clear relationship could be found between APN activity and the toxicity of Cry proteins,<sup>25, 26</sup> suggesting that the action of Cry toxins is dependent on their presence of protein receptors but not necessarily on their enzymatic activities.<sup>26</sup>

However, interpretation of binding data may be obscured by irreversible associations of Cry toxins with BBMV, as well as its reversible associations.<sup>27–29</sup> In fact, Cry toxin action is relatively complex, likely involving more than one mechanism or one receptor. The idea of multiple receptor bindings may explain why toxin resistance has been linked to the mutations detected in either of the protein receptors, cadherins<sup>30,31</sup> or GPI-anchored protein such as APNs<sup>32</sup> and ALPs.<sup>18, 33</sup> Taken together, these results show that cadherins, ALPs, and APNs are likely the potential receptors for Cry toxins. These receptor proteins will be discussed in more detail with respect to Cry toxin action in *Ae. aegypti* larval mosquitoes.

## ■ POTENTIAL RECEPTORS OF CRY TOXINS IN *Aedes aegypti*

**Proteomic Identification Approaches.** The larval mosquito midgut brush border has distinct structural elements, in which digestive enzymes, ion channel proteins, and various extracellular matrices are located. Identification of the proteome of brush border membrane vesicles (BBMV) is a necessary step in defining potential Cry toxin receptors. Recently, a partial proteome of *Ae. aegypti* midgut BBMV was reported, in which a total of 119 proteins were identified using two complementary proteomic approaches.<sup>34</sup> The most predominant proteins were arginine kinase, fatty acid binding protein, actin, aldehyde dehydrogenase, and protein disulfide isomerase.<sup>34</sup> Metalloproteases with aminopeptidase activity and alkaline phosphatases, receptor molecules that serve as targets for Cry toxins,<sup>6,10,35–38</sup> were also identified.

In an alternative approach, proteins separated by two-dimensional electrophoresis gel were probed with the Cry4Ba toxin. In this case the toxin bound three ALP isoforms and an aminopeptidase.<sup>39</sup> Other Cry4Ba-binding proteins included the lipid raft proteins, flotillin and prohibitin, the V-ATPase B subunit, and actin. Generally, a cadherin–catenin complex forms a dynamic link with the actin filament network that is involved in the maintenance of cytoskeleton architecture in eukaryotic organisms.<sup>40</sup> Potentially, insertion of the Cry molecule into the membrane may expose regions of the toxin to the cytoplasm, allowing contact with actin, which could lead to disruption of cytoskeletal links and loss of host cell shape and integrity.<sup>39, 41</sup>

Identification of potential receptors through protein–protein interaction is another proteomics approach commonly used.<sup>17, 18, 42–44</sup> Fernandez et al. reported that BBMV proteins purified from Cry11Aa ligand chromatography generated two proteins of 65 and 62 kDa, which bound the Cry11Aa toxin.<sup>36</sup> In addition, the 62 kDa protein was a degraded product of the 65 kDa protein, and both proteins were characterized as GPI-anchored ALP proteins.<sup>36</sup> Recently, a pull-down assay using biotinylated Cry11Aa toxin as a bait purified three protein bands with molecular masses of 140, 95, and 45 kDa from *Ae. aegypti* larval midgut.<sup>45</sup> With the exception of the 45 kDa actin, three of the proteins isolated were identified as APN, two with a mass of

95 kDa. However, the pull-down assay used in this study differed from that utilized by Fernandez et al., in which no APN proteins were observed.<sup>36</sup> Chen et al.<sup>45</sup> incubated biotinylated Cry11Aa toxin directly with BBMV, whereas Fernandez et al.<sup>36</sup> incubated biotinylated Cry11Aa with a pool of proteins released from BBMV using phosphatidylinositol-specific phospholipase C (PI-PLC). Thus, differences in the methods used probably account for the separate identification of APN and ALP proteins.<sup>45</sup> However, it is particularly noteworthy that the cadherin-like mosquito protein was not identified using the proteomic approaches utilized above.<sup>36, 39, 45–47</sup> The high molecular mass of cadherins ( $\geq 200$  kDa) or its stability could potentially affect its isolation using these approaches in mosquitoes. However, in lepidopteran insects these approaches led to the identification of cadherin as a toxin receptor.<sup>13,14</sup>

**Cadherins.** Cadherins are single-span transmembrane proteins located primarily within adherens junctions. They also belong to a family of calcium-dependent transmembrane glycoproteins. The presence of cadherins on the cell surface leads to cell sorting, cell adhesion, and morphogenesis. Specific interactions provided by extracellular regions can transfer information intracellularly by interacting with a complex network of cytoskeletal and signaling molecules.<sup>48</sup> Cadherins have long been known as Cry toxin receptors in a variety of insects in the orders Lepidoptera (butterflies and moths),<sup>13,14,49–51</sup> Coleoptera (beetles and weevils),<sup>52</sup> and Diptera (mosquitoes).<sup>47,53</sup> However, the cadherins that bind Cry toxins are distinct from other cadherins that are present within adherens junctions.

The toxin-binding cadherins are localized in the insect midgut to regions in which toxin binding has been observed. In the larval midgut of *Ae. aegypti*, cadherin distribution is observed on the apical side of the distal and proximal caeca and on posterior midgut epithelial cells but not in the apical membranes of anterior midgut.<sup>47</sup> Further studies reveal that Cry4Ba and Cry11Aa toxins are also localized to these sites upon binding.<sup>47,54</sup> Thus, there appears to be a direct correlation between the binding pattern of Cry11Aa and Cry4Ba toxins and the localization of cadherin proteins, leading us to believe that this cadherin serves as one of the main targets of Cry toxin binding within the mosquito gut.

The cadherin protein shown to interact with Cry11Aa toxin was a 250 kDa glycoprotein identified in *Ae. aegypti* BBMV.<sup>36</sup> This protein, together with other two proteins of 100 and 65 kDa, was detected by ligand blot assay that bound Cry11Aa. The 65 kDa protein was later identified as an ALP protein.<sup>36</sup> The cadherin protein plays a role in Cry11Aa toxin binding to *Ae. aegypti* midgut epithelia because an anti-AaeCad antibody could compete readily with Cry11Aa toxin binding to BBMV. In contrast, an antibody to the sodium–proton exchanger NHE3, which is also expressed in the midgut of *Ae. aegypti* mosquito, did not compete in the assay.<sup>47</sup>

The Cry toxin-binding cadherins have four distinct structural domains: a cytoplasmic domain, a transmembrane domain, a membrane proximal extracellular domain (MPED), and an ectodomain. The ectodomain in mosquitoes consists of 11 cadherin repeats (CR) instead of 12 repeats observed in moths and beetles. In lepidopteran insects the toxin-binding regions are primarily in the nearest cadherin repeats next to the MPED.<sup>55–57</sup> Similarly, in *Ae. aegypti*, the toxin-binding domain was mapped to a C-terminal fragment that contains CR7–CR11, with Cry11Aa having an affinity of  $\sim 17$  nM for this fragment.<sup>47</sup> Within this C-terminal fragment, CR9–CR11 were found to bind Cry11Aa toxin through domain II loops  $\alpha 8$  and 2. Furthermore, a Cry11Aa

**Table 1. Toxicity of Purified Cry Toxins to Mosquito Larvae and Their Binding Affinity to Midgut Membrane Proteins**

	Cry4Aa <sup>93–95a</sup>	Cry4Ba <sup>61, 93, 94, 96</sup>	Cry4Aa/Cry4Ba <sup>93, 94</sup>	Cry11Aa <sup>45, 47, 96</sup>	Cry11Ba <sup>59, 60, 96</sup>
<i>Ae. aegypti</i> , LC <sub>50</sub> , ng/mL	1360	300	280	122	7.9
binding to BBMV, K <sub>d</sub> , nM	99 <sup>b</sup>	520 <sup>b</sup>		88 <sup>b</sup>	8.2
binding to AeCadherin, K <sub>d</sub> , nM				16.7	
binding to AaeAPN1, K <sub>d</sub> , nM				8.5	
<i>An. gambiae</i> , LC <sub>50</sub> , ng/mL	1170	20	380	326	
binding to AgCadherin, CR9–CR11, K <sub>d</sub> , nM		13			
binding to AgCadherin, CR11–MPED, K <sub>d</sub> , nM		23			
binding to AgALP1, K <sub>d</sub> , nM					23.9
binding to AgAPN2, K <sub>d</sub> , nM					6.4
<i>An. quadrimaculatus</i>					
binding to APN, K <sub>d</sub> , nM					0.56
<i>An. stephensi</i> , LC <sub>50</sub> , ng/mL	7400	550	300	372	2.2
<i>Cx. pipiens</i> , LC <sub>50</sub> , ng/mL	400	>20000	63	10	
<i>Cx. quinquefasciatus</i> , LC <sub>50</sub> , ng/mL	980	>80000	180	1140	3.3
binding to BBMV, K <sub>d</sub> , nM				20–30	

<sup>a</sup>References are in parentheses. <sup>b</sup>IC<sub>50</sub> values are given.

mutant in loop  $\alpha 8$ , E266A, was unable to bind a peptide fragment that contains CR9–CR11.<sup>47</sup> This binding is in agreement with previous work that showed a loop  $\alpha 8$  peptide can compete with Cry11Aa binding to *Ae. aegypti* BBMV.<sup>58</sup> With Cry11Ba, an anti-cadherin antibody also inhibited toxin binding to *Ae. aegypti* BBMV.<sup>59</sup> A cadherin fragment consisting of CR7–CR11 was able to compete with Cry11Ba binding to BBMV. Hence, as with Cry11Aa, the Cry11Ba toxin-binding region is likely localized to CR9–CR11 of the *Ae. aegypti* cadherin receptor.<sup>60</sup>

The importance of the CRs as a toxin-binding region was further studied by determining the correlation between binding and toxin susceptibility in different mosquito strains.<sup>53,61</sup> A CR11–MPED peptide from the cadherin of *Anopheles gambiae* (AgCad1) larvae acted as a synergist of Cry4Ba's toxicity to the *Anopheles* mosquito.<sup>53</sup> It is believed that this truncated cadherin peptide acts as a receptor, leading to cleavage of helix  $\alpha 1$ , thereby promoting formation of the oligomeric form of the toxin that binds the GPI-anchored receptors.<sup>62</sup> Subsequently, it was demonstrated that the *Anopheles* CR9–CR11 and CR11–MPED fragments also enhanced Cry4Ba toxicity to *Ae. aegypti* larvae, whereas a cadherin-based fragment isolated from a coleopteran insect, *Diabrotica virgifera virgifera*, did not affect Cry4Ba toxicity.<sup>61,63</sup> Both CR fragments were further tested for their binding affinity with Cry4Ba toxin. Using a one-site saturation model, it was shown that peptides CR9–CR11 and CR11–MPED bound Cry4B with high affinities of 13 and 23 nM, respectively (Table 1). Furthermore, the longer CR9–CR11 fragment was more potent than CR11–MPED in enhancing Cry4Ba activity against *Ae. aegypti*.<sup>61</sup> On the basis of these results, these fragments can be used as synergists to increase Cry toxicity and potentially overcome insect resistance.

Recently, an *Ae. aegypti* colony having a low level of resistance to *Bt. israelensis* was identified from a field collection. Preliminary identification of resistance genes identified a N-cadherin as well as two other proteins including an APN as potential toxin targets.<sup>64</sup> The N-cadherin is expressed in the larval midgut but is not known to bind any mosquitocidal toxins to date.

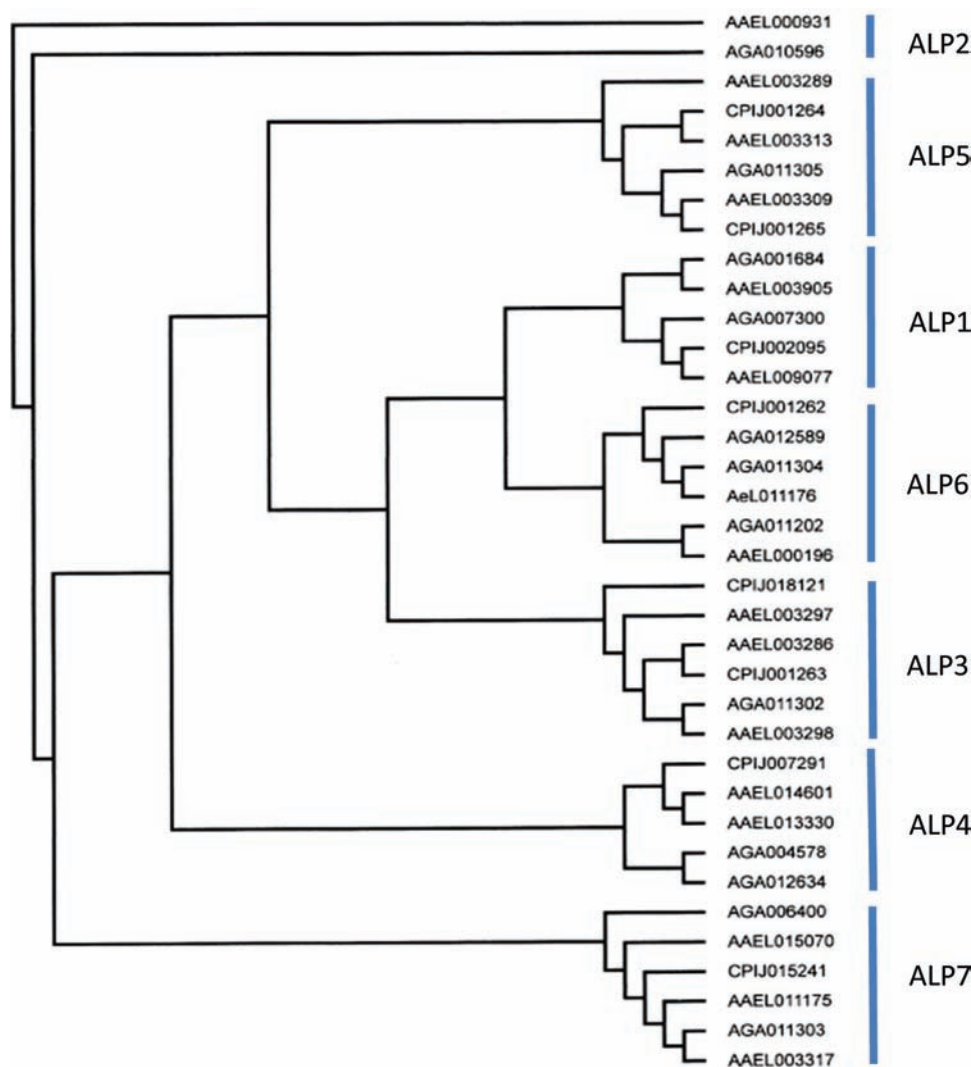
Mutations of mosquito cadherin genes will likely lead to lower larval sensitivity to single Cry toxins. However, unlike lepidopteran active strains, mosquitocidal active strains, such as *Bt israelensis*,

produce multiple toxins with different modes of action. Consequently, the development of high-level mosquito resistance to these mosquitocidal strains has been lacking. In large part this lack of resistance development is due to the presence of Cyt1A, which acts to delay resistance development<sup>65</sup> by acting as a surrogate receptor for the mosquitocidal Cry toxins.<sup>66</sup> In contrast, mosquito resistance to *B. sphaericus* has been rapid in the field.<sup>67–69</sup>

**ALPs.** There is increasing evidence that ALPs are Cry toxin receptors in various insect species.<sup>10,18,36,70–72</sup> In the *Ae. aegypti* mosquito, preliminary reports suggested mosquitocidal Cry toxins bound proteins of 65 and 62 kDa.<sup>73,74</sup> Using a ligand blotting technique, the binding of biotinylated Cry toxins to these proteins was shown to be reversible, and both Cry4Ba and Cry11Aa toxins competed for binding to these two proteins.<sup>73</sup> The 65 kDa protein lacked leucine aminopeptidase activity, and the 62 kDa protein was a degradation product of the 65 kDa protein. Interestingly, Cry toxins inactive against *Ae. aegypti* larvae, such as the lepidopteran active Cry9Aa toxin, either fail to bind to the 65 and 62 kDa proteins or bind but did not compete for Cry11Aa toxin binding.<sup>74</sup> On the basis of these results, the 65 and 62 kDa proteins are likely to be Cry4Ba and Cry11Aa toxin receptors in gut epithelial cells of *Ae. aegypti* larvae.

Further identification of ALP as Cry toxin receptors in *Ae. aegypti* was made possible by ligand blot analysis between Cry11Aa toxin and a pool of proteins released from BBMV by PI-PLC treatment.<sup>36</sup> Three proteins of 200, 100, and 65 kDa were identified to bind the Cry11Aa toxin. The 65 kDa protein was purified by affinity chromatography with Cry11Aa toxin, and this protein was later characterized as a GPI-anchored ALP enzyme.<sup>70</sup> The specific activity of this ALP was enriched up to 6-fold after PI-PLC treatment of BBMV and Cry11Aa affinity chromatography, suggesting an abundance of ALP proteins in *Ae. aegypti* BBMV.<sup>36</sup>

Immunofluorescence studies have shown that ALPs are located predominantly in gastric caeca and posterior midgut epithelial cells. The distribution pattern is similar to that of the cadherin protein and bound Cry11Aa toxin.<sup>47</sup> Further studies have shown that phages displaying ALP-specific peptides decreased toxicity against *Ae. aegypti* larvae. Domain II loop  $\alpha 8$  of Cry11Aa toxin was involved in the interaction with ALP, because



**Figure 1.** Phylogenetic tree obtained from ClustalX alignment followed by bootstrap analysis using the maximum likelihood method of mosquito alkaline phosphatases. Protein sequences were obtained from Vectorbase for the three mosquito species, *Anopheles gambiae* (Agam Gene build 3.5; sequences have the prefix AGA); *Aedes aegypti* (AeGL Gene build 1.2; sequences have the prefix AAEL); and *Culex pipiens* (CpipJ Gene build 1.2; sequences have the prefix CPIJ). These prefixes are used as in noted in Vectorbase.

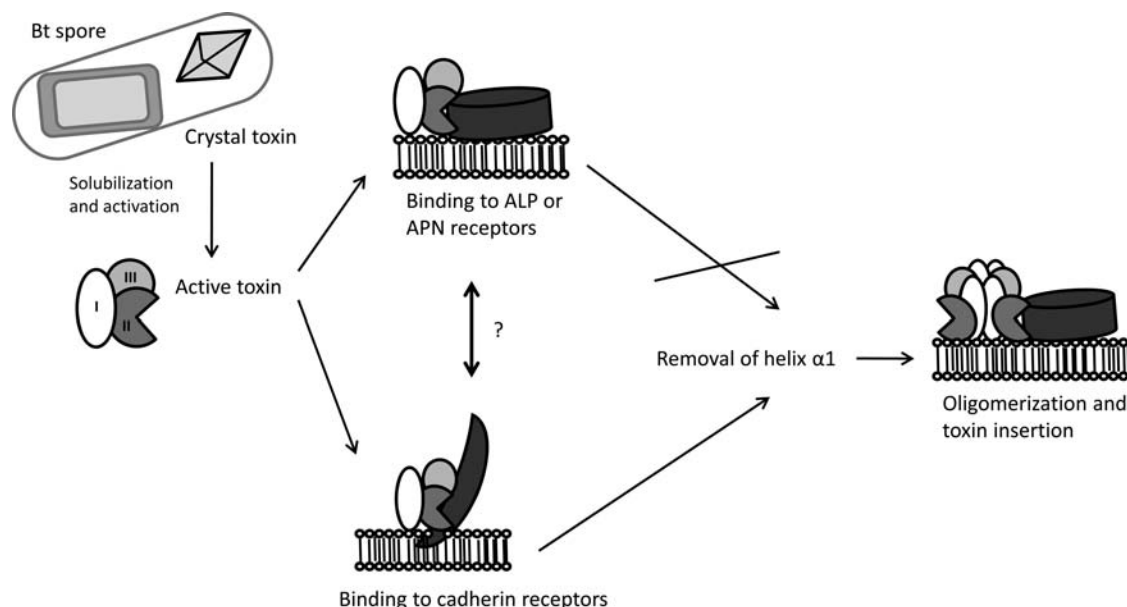
the binding of Cry11Aa and the displayed peptide phages was specifically attenuated by a peptide with a sequence corresponding to loop  $\alpha 8$ .<sup>36</sup> The putative ALP receptors have been subsequently cloned and characterized.<sup>70</sup> Of three cloned ALPs, the ALP1 isoform (AAEL009077) was shown to bind Cry11Aa and the displayed peptide phage that specifically binds the midgut ALP–Cry11Aa receptor. Furthermore, two Cry11Aa regions (R59–G102 and N257–I296) that bind ALP1 were mapped by examining Cry11Aa binding to nine overlapping peptides of ALP1. By using a peptide spot array of the Cry11Aa domain III together with site-directed mutagenesis, it was shown that the ALP1 R59–G102 region binds Cry11Aa through domain II loop  $\alpha 8$ , whereas the ALP1 N257–I296 region interacts with Cry11Aa through domain III<sup>561</sup>RVQSQNSGNN<sup>570</sup> located in  $\beta 18$ – $\beta 19$ . Conclusions drawn from these studies were that the Cry11Aa domains II and III are involved in binding two distinct binding sites in the ALP1 receptor.<sup>70</sup>

Experiments carried out with Cry4Ba toxin and toxin-overlay assays were used to identify the toxin-binding BBMV protein

complexes in *Ae. aegypti*.<sup>54</sup> It was reported that the domain II–III fragment reproducibly reacted with the same *Ae. aegypti* BBMV proteins as did the Cry4Ba toxin. One of these proteins was a 60 kDa protein, a size that approximates that of an ALP. However, the isolated domain III fragment did not bind these BBMV proteins, suggesting domain II of Cry4Ba toxin is essential for interaction with *Ae. aegypti* midgut proteins.<sup>54</sup>

More recently, BBMV competitive assays revealed that the Cry11Ba binding to *Ae. aegypti* BBMV could compete with *Aedes* ALPs. It was also demonstrated that AaeALP1 more readily competes off the binding of Cry11Ba toxin to BBMV than do AaeALP2 (AAEL000931) and AaeALP3 (AAEL003286), suggesting that ALP1 could be more important in the interaction with Cry11Ba than the other ALP isoforms.<sup>60</sup> Thus, the ALP protein is an essential receptor molecule that mediates Cry11Aa toxicity and also is involved in the binding interaction of Cry4Ba and Cry11Ba with *Ae. aegypti* BBMV.

The diversity of ALPs present in mosquitoes is much greater than the three ALPs identified above. Depending on the level of



**Figure 2.** Models of Cry toxin mechanism in mosquitoes. Upon ingestion by a mosquito larva, the alkaline midgut environment promotes solubilization of crystalline inclusions releasing the protoxins, which are cleaved by gut proteases, resulting in the formation of active toxins. Toxin binding occurs first with the cadherin protein triggering cleavage of helix  $\alpha 1$ , leading to the formation of oligomeric toxins, which then bind anchored APN or ALP proteins in lipid rafts, resulting in the insertion of oligomeric toxins into the cell membrane. Alternatively, because mosquitocidal toxins have high affinity to APN and ALP receptors, it is possible that toxin binding initially involves APN and ALP receptors followed by binding to a cadherin protein.

diversity chosen, there are likely seven ALP families in mosquito species (Figure 1). Moreover, there appears to be significant gene diversity within these seven major ALP family classes. When compared with ALP sequences from other insects including *Drosophila melanogaster*, there is even more significant diversity among the ALP families (data not shown).

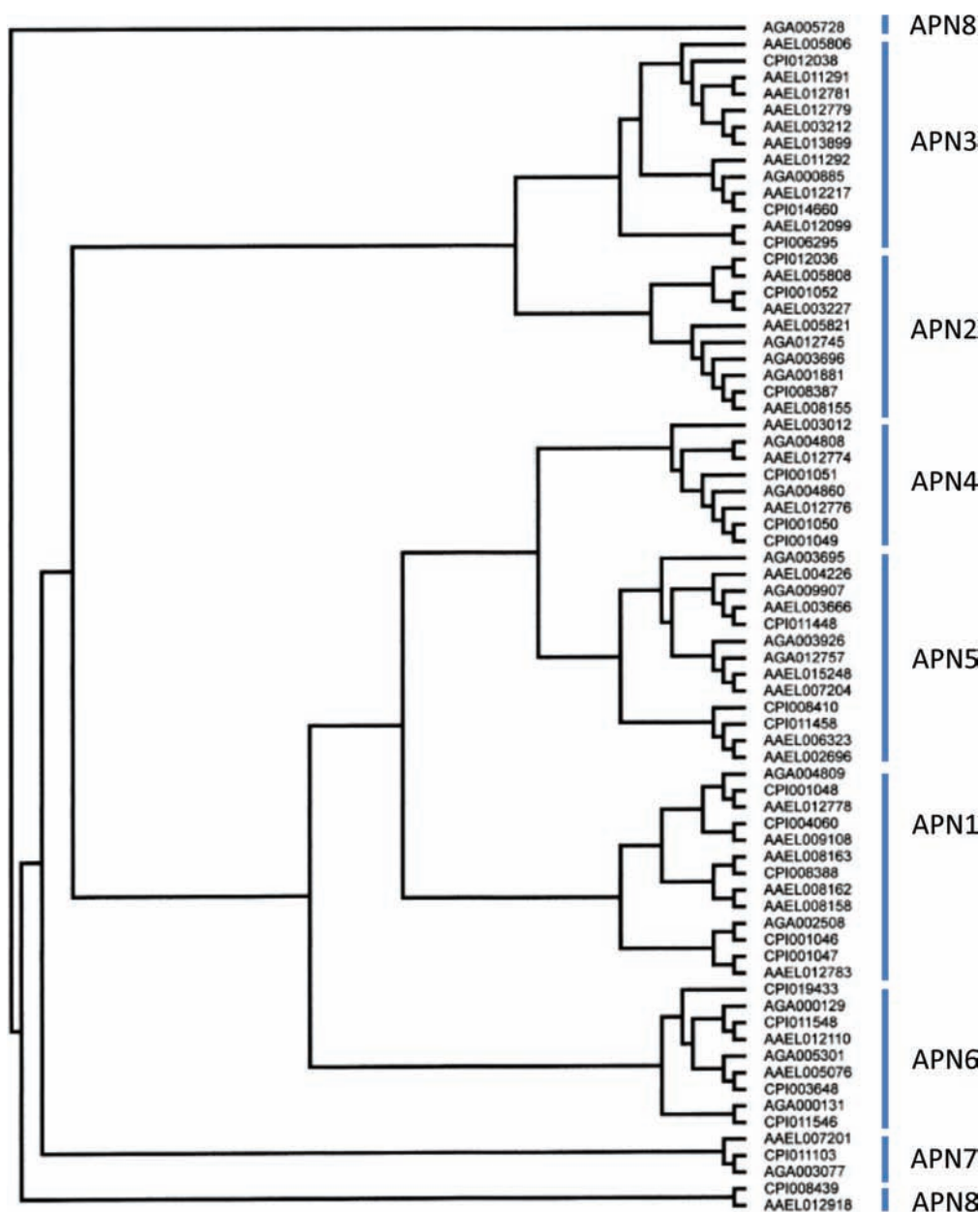
**APNs.** APNs are membrane proteins that function to cleave amino acids at the N-terminus of polypeptides. They commonly serve, along with other enzymes, in the digestion of proteins derived from the insect's diet.<sup>75</sup> These proteins have long been identified as Cry toxin receptors in various insect species.<sup>16,76–84</sup> Recently, a deletion mutation of the APN gene was associated with Cry1Ac resistance in *Helicoverpa armigera*,<sup>84</sup> confirming that APN proteins may play an important role in the mechanism of Cry toxicity.

APNs require a signal peptide to direct nascent polypeptides to the outer surface of the cytoplasmic membrane, where they are attached by a GPI anchor.<sup>5,85,86</sup> The APNs also undergo post-translational modifications through N- and O-glycosylation, including that by N-acetylgalactosamine (GalNAc), which is considered to be important for interactions between Cry1A toxins and APNs.<sup>42,87–89</sup> However, some APNs are believed to bind toxins in a glycan-independent aspect as discussed below. Collectively, these modifications give mature proteins of between 90 and 170 kDa in size, which affect the protein structure, stability, molecular recognition, and signaling activities.

Less is known of APNs as Cry toxin receptors in mosquitoes. In *Anopheles quadrimaculatus* and *An. gambiae*, APNs were identified as putative receptors for the Cry11Ba toxin.<sup>90,91</sup> Both of these APNs showed high affinity for the Cry11Ba toxin. For instance, an APN from *An. quadrimaculatus* binds Cry11Ba with a  $K_d$  of 0.56 nM, whereas a 106 kDa APN from *An. gambiae* binds the same toxin with an apparent affinity of 6.4 nM (Table 1). This is in contrast to the binding affinity of Cry1A toxins to lepidopteran APNs that are in the range of 100 nM, suggesting that APN

binding in mosquitoes may have a different role in the initial binding steps of mosquitocidal Cry toxins. It is believed that high-affinity toxin binding occurs first to the more abundant GPI-anchored proteins and then to cadherin (Figure 2). Nevertheless, no experimental evidence to date supports this possibility in mosquitoes. A partial AgAPN2 fragment expressed in *Escherichia coli* was able to bind Cry11Ba toxin in a dot-blot experiment and a microtiter plate binding assay,<sup>91</sup> suggesting this APN protein binds toxins in a glycan-independent manner. The 60 kDa APN (AgAPN2) from *An. gambiae* has only about a 46% homology to an APN from the sequenced genome (Agam P3.5 Gene Build, Vectorbase), whereas the *An. quadrimaculatus* APN has homology to a number of APNs from *An. gambiae*.

The role of this receptor class was demonstrated only recently in *Ae. aegypti*.<sup>45</sup> In this study, *Ae. aegypti* APNs, named AaeAPN1 (AAEL012778) and AaeAPN2 (AAEL008155), were isolated and identified as Cry11Aa-binding proteins in a biotinylated Cry11Aa toxin pull-down assay. As bait in the purifying process, Cry11Aa toxin bound four protein bands with molecular masses of 140, 95, 45, and 32 kDa.<sup>45</sup> The 32 kDa protein is a fragment of Cry11Aa toxin. Three pulled-down proteins were identified as APNs; the 140 kDa protein was AaeAPN1, whereas the 95 kDa consisted of two proteins identified as AaeAPN2 and AaeAPN3 (AAEL012774). AaeAPN1 was cloned and a partial fragment expressed in *E. coli*.<sup>45</sup> This fragment was able to bind Cry11Aa, suggesting the interaction of AaeAPN1–Cry11Aa is also glycan-independent.<sup>45</sup> Further studies revealed that the full-length AaeAPN2 and two of its fragments, AaeAPN2b and AaeAPN2e, bound Cry11Aa toxin and they also competed with Cry11Aa binding to *Ae. aegypti* BBMV. The data suggest amino acids 569–641 form part of the Cry11Aa toxin-binding region in AaeAPN2 (J. Chen and S. S. Gill, unpublished work). Similarly in AaeAPN1, one of the Cry11Aa-binding regions is localized to amino acids 525–778.<sup>45</sup> However, it should be noted that these



**Figure 3.** Phylogenetic tree obtained from ClustalX alignment followed by bootstrap analysis using the maximum likelihood method of mosquito aminopeptidases. Protein sequences were obtained from Vectorbase for the three mosquito species *Anopheles gambiae* (Agam Gene build 3.5; sequences have the prefix AGA), *Aedes aegypti* (AeagL Gene build 1.2; sequences have the prefix AAEL), and *Culex pipiens* (CpipJ Gene build 1.2; sequences have the prefix CPIJ).

regions in the two APNs are located toward the C-terminal part of the respective proteins. These binding regions differ from the observed Cry1Aa binding site in a *Bombyx mori* APN, which is localized to the N-terminal region.<sup>83,92</sup> Interestingly, Sf21 cells expressing either AaeAPN1 or AaeAPN2 showed no increased sensitivity to Cry11Aa toxicity. It is noteworthy that the molecular mass of AaeAPN1 in Sf21 cells was lower than that of these proteins in BBMV. Therefore, it is possible that posttranslational modifications in Sf21 cells might differ from that observed in the epithelial cells of *Ae. aegypti* midgut and, also, improper glycosylations could affect toxin binding.<sup>45</sup>

Depending on the level of divergence considered, APNs can be divided into eight classes.<sup>91</sup> It is evident, however, that mosquito APNs show significant differences from lepidopteran APNs. There is a great diversity in APNs among the three mosquito

species for which genomes have been sequenced. Indeed, phylogenetic analysis of *An. gambiae*, *Ae. aegypti*, and *Culex pipiens* APNs shows that eight major families can be readily classified among these three mosquito species (Figure 3).

### TOXIN RECEPTOR EXPRESSION

Although high-level receptor expression is observed in tissues and cell types that bind Cry toxins, the expression of cadherins, ALPs, and APNs is not limited to these tissues. In fact, all three receptor types are also expressed in the adult female midgut and in the Malpighian tubules (data not shown). Clearly these proteins have functions that are critical for these tissues.

The tissue distribution patterns of the three receptor types have been examined in greater detail with immunofluorescence

using specific antibodies. For example, *Aedes* cadherin has been localized to the apical side of the distal and proximal caeca and on the posterior midgut epithelial cells, but its expression is not observed in the anterior midgut.<sup>47</sup> This pattern of expression suggests some regionality in cadherin expression in the larval midgut. Cellular distribution in the adult midgut or in Malpighian tubules has not been determined. As noted earlier, AaeALP1 expression is similar to that of cadherin, and hence it is expressed in gastric caeca and posterior midgut epithelial cells.<sup>47</sup>

In the larval *Aedes* midgut AaeAPN1 showed a distinct expression pattern, with expression observed in the apical side of posterior midgut epithelial cells but not in the anterior midgut and gastric caeca cells.<sup>45</sup> This expression pattern is similar to that observed in *M. sexta* gut, in which APN was preferentially expressed in the posterior gut epithelial cells. In contrast, AaeAPN2 was expressed not in posterior midgut cells but in the anterior midgut and gastric caeca cells (J. Chen, K. G. Aminova, and S. S. Gill, unpublished work).

Microarray experiments performed using the gene set obtained from the recently sequenced *Ae. aegypti* genome were used to assess the effect of toxin exposure on the expression patterns of cadherins, ALPs, and APNs. Low- or high-level toxin exposure had no effect on cadherin expression (data not shown). Similarly, the expression of AaeALP1 (AAEL009077), which bound Cry11Aa and also binds Cry11Ba, did not change following Cry11Aa exposure. In contrast, AaeALP2 (AAEL000931) and AaeALP4 (AAEL013330), which bind these toxins poorly, showed significant decrease in expression levels following Cry11Aa exposure. A similar pattern was observed with APNs. It thus appears that toxin exposure had little effect on the receptor expression patterns.

## AUTHOR INFORMATION

### Corresponding Author

\*E-mail sarjeet.gill@ucr.edu; phone (951) 827-4621/3547.

### Funding Sources

This research was funded in part through grants from the National Institutes of Health, 1R01 AI066014, DGAPA/UNAM IN218608, and IN210208-N, CONACyT U48631-Q, and the University of California Agricultural Experiment Station.

## ACKNOWLEDGMENT

We appreciate the technical assistance of Su-bum Lee.

## REFERENCES

- (1) Shelton, A. M.; Zhao, J. Z.; Roush, R. T. Economic, ecological, food safety, and social consequences of the deployment of Bt transgenic plants. *Annu. Rev. Entomol.* **2002**, *47*, 845–881.
- (2) Van Rie, J. *Bacillus thuringiensis* and its use in transgenic insect control technologies. *Int. J. Med. Microbiol.* **2000**, *290*, 463–469.
- (3) Tabashnik, B. E.; Carriere, Y.; Dennehy, T. J.; Morin, S.; Sisterson, M. S.; Roush, R. T.; Shelton, A. M.; Zhao, J. Z. Insect resistance to transgenic Bt crops: lessons from the laboratory and field. *J. Econ. Entomol.* **2003**, *96*, 1031–1038.
- (4) Knowles, B. H.; Blatt, M. R.; Tester, M.; Horsnell, J. M.; Carroll, J.; Menestrina, G.; Ellar, D. J. A cytolytic  $\delta$ -endotoxin from *Bacillus thuringiensis* var. *israelensis* forms cation-selective channels in planar lipid bilayers. *FEBS Lett.* **1989**, *244*, 259–262.
- (5) Pigott, C. R.; Ellar, D. J. Role of receptors in *Bacillus thuringiensis* crystal toxin activity. *Microbiol. Mol. Biol. Rev.* **2007**, *71*, 255–281.
- (6) Bravo, A.; Gill, S. S.; Soberon, M. Mode of action of *Bacillus thuringiensis* Cry and Cyt toxins and their potential for insect control. *Toxicon* **2007**, *49*, 423–435.
- (7) Bravo, A.; Miranda, R.; Gomez, I.; Soberon, M. Pore formation activity of Cry1Ab toxin from *Bacillus thuringiensis* in an improved membrane vesicle preparation from *Manduca sexta* midgut cell microvilli. *Biochim. Biophys. Acta* **2002**, *1562*, 63–69.
- (8) Jimenez-Juarez, N.; Munoz-Garay, C.; Gomez, I.; Gill, S. S.; Soberon, M.; Bravo, A. The pre-pore from *Bacillus thuringiensis* Cry1Ab toxin is necessary to induce insect death in *Manduca sexta*. *Peptides* **2008**, *29*, 318–323.
- (9) Gomez, I.; Sanchez, J.; Miranda, R.; Bravo, A.; Soberon, M. Cadherin-like receptor binding facilitates proteolytic cleavage of helix  $\alpha$ -1 in domain I and oligomer pre-pore formation of *Bacillus thuringiensis* Cry1Ab toxin. *FEBS Lett.* **2002**, *513*, 242–246.
- (10) Arenas, I.; Bravo, A.; Soberon, M.; Gomez, I. Role of alkaline phosphatase from *Manduca sexta* in the mechanism of action of *Bacillus thuringiensis* Cry1Ab toxin. *J. Biol. Chem.* **2010**, *285*, 12497–12503.
- (11) Pacheco, S.; Gomez, I.; Arenas, I.; Saab-Rincon, G.; Rodriguez-Almazan, C.; Gill, S. S.; Bravo, A.; Soberon, M. Domain II loop 3 of *Bacillus thuringiensis* Cry1Ab toxin is involved in a “ping-pong” binding mechanism with *Manduca sexta* aminopeptidase-N and cadherin receptors. *J. Biol. Chem.* **2009**, *284*, 32750–32507.
- (12) Zhang, X.; Candas, M.; Griko, N. B.; Taussig, R.; Bulla, L. A., Jr. A mechanism of cell death involving an adenylyl cyclase/PKA signaling pathway is induced by the Cry1Ab toxin of *Bacillus thuringiensis*. *Proc. Natl. Acad. Sci. U.S.A.* **2006**, *103*, 9897–9902.
- (13) Vadlamudi, R. K.; Ji, T. H.; Bulla, L. A., Jr. A specific binding protein from *Manduca sexta* for the insecticidal toxin of *Bacillus thuringiensis* subsp. *berliner*. *J. Biol. Chem.* **1993**, *268*, 12334–12340.
- (14) Nagamatsu, Y.; Toda, S.; Yamaguchi, F.; Ogo, M.; Kogure, M.; Nakamura, M.; Shibata, Y.; Katsumoto, T. Identification of *Bombyx mori* midgut receptor for *Bacillus thuringiensis* insecticidal CryIA(a) toxin. *Biosci., Biotechnol., Biochem.* **1998**, *62*, 718–726.
- (15) Hara, H.; Atsumi, S.; Yaoi, K.; Nakanishi, K.; Higurashi, S.; Miura, N.; Tabunoki, H.; Sato, R. A cadherin-like protein functions as a receptor for *Bacillus thuringiensis* Cry1Aa and Cry1Ac toxins on midgut epithelial cells of *Bombyx mori* larvae. *FEBS Lett.* **2003**, *538*, 29–34.
- (16) Gill, S. S.; Cowles, E. A.; Francis, V. Identification, isolation, and cloning of a *Bacillus thuringiensis* Cry1Ac toxin-binding protein from the midgut of the lepidopteran insect *Heliothis virescens*. *J. Biol. Chem.* **1995**, *270*, 27277–27282.
- (17) Knight, P. J.; Knowles, B. H.; Ellar, D. J. Molecular cloning of an insect aminopeptidase N that serves as a receptor for *Bacillus thuringiensis* CryIA(c) toxin. *J. Biol. Chem.* **1995**, *270*, 17765–17770.
- (18) Jurat-Fuentes, J. L.; Adang, M. J. Characterization of a Cry1Ac-receptor alkaline phosphatase in susceptible and resistant *Heliothis virescens* larvae. *Eur. J. Biochem.* **2004**, *271*, 3127–3135.
- (19) Valaitis, A. P.; Jenkins, J. L.; Lee, M. K.; Dean, D. H.; Garner, K. J. Isolation and partial characterization of gypsy moth BTR-270, an anionic brush border membrane glycoconjugate that binds *Bacillus thuringiensis* Cry1A toxins with high affinity. *Arch. Insect Biochem. Physiol.* **2001**, *46*, 186–200.
- (20) Griffiths, J. S.; Haslam, S. M.; Yang, T.; Garczynski, S. F.; Mulloy, B.; Morris, H.; Cremer, P. S.; Dell, A.; Adang, M. J.; Aroian, R. V. Glycolipids as receptors for *Bacillus thuringiensis* crystal toxin. *Science* **2005**, *307*, 922–925.
- (21) Fernandez-Luna, M. T.; Lanz-Mendoza, H.; Gill, S. S.; Bravo, A.; Soberon, M.; Miranda-Rios, J. An  $\alpha$ -amylase is a novel receptor for *Bacillus thuringiensis* ssp. *israelensis* Cry4Ba and Cry11Aa toxins in the malaria vector mosquito *Anopheles albimanus* (Diptera: Culicidae). *Environ. Microbiol.* **2010**, *12*, 746–757.
- (22) Chen, J.; Brown, M. R.; Hua, G.; Adang, M. J. Comparison of the localization of *Bacillus thuringiensis* Cry1A  $\delta$ -endotoxins and their binding proteins in larval midgut of tobacco hornworm, *Manduca sexta*. *Cell Tissue Res.* **2005**, *321*, 123–129.
- (23) Bravo, A.; Hendrickx, S.; Jansen, S.; Peferoen, M. Immunocytochemical analysis of specific binding of *Bacillus thuringiensis*

insecticidal crystal proteins to lepidopteran and coleopteran midgut membranes. *J. Invertebr. Pathol.* **1992**, *60*, 247–254.

(24) Jenkins, J. L.; Lee, M. K.; Sangadala, S.; Adang, M. J.; Dean, D. H. Binding of *Bacillus thuringiensis* Cry1Ac toxin to *Manduca sexta* aminopeptidase-N receptor is not directly related to toxicity. *FEBS Lett.* **1999**, *462*, 373–376.

(25) Gilliland, A.; Chambers, C. E.; Bone, E. J.; Ellar, D. J. Role of *Bacillus thuringiensis* Cry1  $\delta$ -endotoxin binding in determining potency during lepidopteran larval development. *Appl. Environ. Microbiol.* **2002**, *68*, 1509–1515.

(26) Lorence, A.; Darszon, A.; Bravo, A. Aminopeptidase dependent pore formation of *Bacillus thuringiensis* Cry1Ac toxin on *Trichoplusia ni* membranes. *FEBS Lett.* **1997**, *414*, 303–307.

(27) Liang, Y.; Patel, S. S.; Dean, D. H. Irreversible binding kinetics of *Bacillus thuringiensis* Cry1A  $\delta$ -endotoxins to gypsy moth brush border membrane vesicles is directly correlated to toxicity. *J. Biol. Chem.* **1995**, *270*, 24719–24724.

(28) Luo, K.; Banks, D.; Adang, M. J. Toxicity, binding, and permeability analyses of four *Bacillus thuringiensis* cry1  $\delta$ -endotoxins using brush border membrane vesicles of *Spodoptera exigua* and *Spodoptera frugiperda*. *Appl. Environ. Microbiol.* **1999**, *65*, 457–464.

(29) Wu, S. J.; Dean, D. H. Functional significance of loops in the receptor binding domain of *Bacillus thuringiensis* CryIIIa  $\delta$ -endotoxin. *J. Mol. Biol.* **1996**, *255*, 628–640.

(30) Xu, X.; Yu, L.; Wu, Y. Disruption of a cadherin gene associated with resistance to Cry1Ac  $\delta$ -endotoxin of *Bacillus thuringiensis* in *Helicoverpa armigera*. *Appl. Environ. Microbiol.* **2005**, *71*, 948–954.

(31) Yang, Y.; Chen, H.; Wu, Y.; Yang, Y.; Wu, S. Mutated cadherin alleles from a field population of *Helicoverpa armigera* confer resistance to *Bacillus thuringiensis* toxin Cry1Ac. *Appl. Environ. Microbiol.* **2007**, *73*, 6939–6944.

(32) Herrero, S.; Gechev, T.; Bakker, P. L.; Moar, W. J.; de Maagd, R. A. *Bacillus thuringiensis* Cry1Ca-resistant *Spodoptera exigua* lacks expression of one of four aminopeptidase N genes. *BMC Genomics* **2005**, *6*, 96.

(33) Jurat-Fuentes, J. L.; Adang, M. J. Cry toxin mode of action in susceptible and resistant *Heliothis virescens* larvae. *J. Invertebr. Pathol.* **2006**, *92*, 166–171.

(34) Popova-Butler, A.; Dean, D. H. Proteomic analysis of the mosquito *Aedes aegypti* midgut brush border membrane vesicles. *J. Insect Physiol.* **2009**, *55*, 264–72.

(35) Gomez, I.; Pardo-Lopez, L.; Munoz-Garay, C.; Fernandez, L. E.; Perez, C.; Sanchez, J.; Soberon, M.; Bravo, A. Role of receptor interaction in the mode of action of insecticidal Cry and Cyt toxins produced by *Bacillus thuringiensis*. *Peptides* **2007**, *28*, 169–173.

(36) Fernandez, L. E.; Aimanova, K. G.; Gill, S. S.; Bravo, A.; Soberon, M. A GPI-anchored alkaline phosphatase is a functional midgut receptor of Cry11Aa toxin in *Aedes aegypti* larvae. *Biochem. J.* **2006**, *394*, 77–84.

(37) Ingle, S. S.; Trivedi, N.; Prasad, R.; Kuruvilla, J.; Rao, K. K.; Chhatpar, H. S. Aminopeptidase-N from the *Helicoverpa armigera* (Hubner) brush border membrane vesicles as a receptor of *Bacillus thuringiensis* crylac  $\delta$ -endotoxin. *Curr. Microbiol.* **2001**, *43*, 255–259.

(38) Oltean, D. I.; Pullikuth, A. K.; Lee, H. K.; Gill, S. S. Partial purification and characterization of *Bacillus thuringiensis* Cry1A toxin receptor A from *Heliothis virescens* and cloning of the corresponding cDNA. *Appl. Environ. Microbiol.* **1999**, *65*, 4760–4766.

(39) Bayyareddy, K.; Andacht, T. M.; Abdullah, M. A.; Adang, M. J. Proteomic identification of *Bacillus thuringiensis* subsp. *israelensis* toxin Cry4Ba binding proteins in midgut membranes from *Aedes* (*Stegomyia*) *aegypti* Linnaeus (Diptera, Culicidae) larvae. *Insect Biochem. Mol. Biol.* **2009**, *39*, 279–286.

(40) Shimada, Y.; Usui, T.; Yanagawa, S.; Takeichi, M.; Uemura, T. Asymmetric colocalization of Flamingo, a seven-pass transmembrane cadherin, and Dishevelled in planar cell polarization. *Curr. Biol.* **2001**, *11*, 859–863.

(41) Schlichting, K.; Wilsch-Brauninger, M.; Demontis, F.; Dahmann, C. Cadherin Cad99C is required for normal microvilli morphology in *Drosophila* follicle cells. *J. Cell. Sci.* **2006**, *119*, 1184–1195.

(42) Knight, P. J.; Crickmore, N.; Ellar, D. J. The receptor for *Bacillus thuringiensis* Cry1A(c)  $\delta$ -endotoxin in the brush border membrane of the lepidopteran *Manduca sexta* is aminopeptidase N. *Mol. Microbiol.* **1994**, *11*, 429–436.

(43) Charles, C.-F.; Darboux, I.; Pauron, D.; Nielsen-LeRoux, C. Mosquitocidal *Bacillus sphaericus*: toxins, genetics, mode of action, use, and resistance mechanisms. In *Comprehensive Molecular Insect Science*; Gilbert, L. I., Kostas, L., Gill, S. S., Eds.; Elsevier: Oxford, U.K., 2005; Vol. 6, pp 207–231.

(44) Darboux, I.; Nielsen-LeRoux, C.; Charles, J.; Pauron, D. The receptor of *Bacillus sphaericus* binary toxin in *Culex pipiens* (Diptera: Culicidae) midgut: molecular cloning and expression. *Insect Biochem. Mol. Biol.* **2001**, *31*, 981–990.

(45) Chen, J.; Aimanova, K. G.; Pan, S.; Gill, S. S. Identification and characterization of *Aedes aegypti* aminopeptidase N as a putative receptor of *Bacillus thuringiensis* Cry11A toxin. *Insect Biochem. Mol. Biol.* **2009**, *39*, 688–696.

(46) McNall, R. J.; Adang, M. J. Identification of novel *Bacillus thuringiensis* Cry1Ac binding proteins in *Manduca sexta* midgut through proteomic analysis. *Insect Biochem. Mol. Biol.* **2003**, *33*, 999–1010.

(47) Chen, J.; Aimanova, K. G.; Fernandez, L. E.; Bravo, A.; Soberon, M.; Gill, S. S. *Aedes aegypti* cadherin serves as a putative receptor of the Cry11Aa toxin from *Bacillus thuringiensis* subsp. *israelensis*. *Biochem. J.* **2009**, *424*, 191–200.

(48) Angst, B. D.; Marcozzi, C.; Magee, A. I. The cadherin superfamily: diversity in form and function. *J. Cell Sci.* **2001**, *114*, 629–641.

(49) Gahan, L. J.; Gould, F.; Heckle, D. G. Identification of a gene associated with Bt resistance in *Heliothis virescens*. *Science* **2001**, *293*, 857–860.

(50) Morin, S.; Biggs, R. W.; Sisterson, M. S.; Shriver, L.; Ellers-Kirk, C.; Higginson, D.; Holley, D.; Gahan, L. J.; Heckle, D. G.; Carriere, Y.; Dennehy, T. J.; Brown, J. K.; Tabashnik, B. E. Three cadherin alleles associated with resistance to *Bacillus thuringiensis* in pink bollworm. *Proc. Natl. Acad. Sci. U.S.A.* **2003**, *100*, 5004–5009.

(51) Vadlamudi, R. K.; Weber, E.; Ji, I.; Ji, T. H.; Bulla, L. A., Jr. Cloning and expression of a receptor for an insecticidal toxin of *Bacillus thuringiensis*. *J. Biol. Chem.* **1995**, *270*, 5490–5494.

(52) Fabrick, J.; Oppert, C.; Lorenzen, M. D.; Morris, K.; Oppert, B.; Jurat-Fuentes, J. L. A novel tenebrio molitor cadherin is a functional receptor for *Bacillus thuringiensis* Cry3Aa toxin. *J. Biol. Chem.* **2009**, *284*, 18401–18410.

(53) Hua, G.; Zhang, R.; Abdullah, M. A.; Adang, M. J. *Anopheles gambiae* cadherin AgCad1 binds the Cry4Ba toxin of *Bacillus thuringiensis israelensis* and a fragment of AgCad1 synergizes toxicity. *Biochemistry* **2008**, *47*, 5101–5110.

(54) Moonsom, S.; Chairri, U.; Kasinrer, W.; Angsuthanasombat, C. Binding characteristics to mosquito-larval midgut proteins of the cloned domain II-III fragment from the *Bacillus thuringiensis* Cry4Ba toxin. *J. Biochem. Mol. Biol.* **2007**, *40*, 783–790.

(55) Chen, J.; Hua, G.; Jurat-Fuentes, J. L.; Abdullah, M. A.; Adang, M. J. Synergism of *Bacillus thuringiensis* toxins by a fragment of a toxin-binding cadherin. *Proc. Natl. Acad. Sci. U.S.A.* **2007**, *104*, 13901–13906.

(56) Griko, N. B.; Rose-Young, L.; Zhang, X.; Carpenter, L.; Candas, M.; Ibrahim, M. A.; Junker, M.; Bulla, L. A., Jr. Univalent binding of the Cry1Ab toxin of *Bacillus thuringiensis* to a conserved structural motif in the cadherin receptor BT-R1. *Biochemistry* **2007**, *46*, 10001–10007.

(57) Xie, R.; Zhuang, M.; Ross, L. S.; Gomez, I.; Oltean, D. I.; Bravo, A.; Soberon, M.; Gill, S. S. Single amino acid mutations in the cadherin receptor from *Heliothis virescens* affect its toxin binding ability to Cry1A toxins. *J. Biol. Chem.* **2005**, *280*, 8416–8425.

(58) Fernandez, L. E.; Perez, C.; Segovia, L.; Rodriguez, M. H.; Gill, S. S.; Bravo, A.; Soberon, M. Cry11Aa toxin from *Bacillus thuringiensis* binds its receptor in *Aedes aegypti* mosquito larvae through loop  $\alpha$ -8 of domain II. *FEBS Lett.* **2005**, *579*, 3508–3514.

(59) Likitvivanavong, S.; Aimanova, K.; Gill, S. S. Loop residues of the receptor binding domain of *Bacillus thuringiensis* Cry11Ba toxin are important for mosquitocidal activity. *FEBS Lett.* **2009**, *583*, 2021–2030.

(60) Likitvivanavong, S.; Chen, J.; Bravo, A.; Soberon, M.; Gill, S. S. Analysis of the role of cadherin, alkaline phosphatase and aminopeptidase N as receptors of Cry11Ba toxin from *Bacillus thuringiensis* in



*Aedes aegypti*. *Appl. Environ. Microbiol.* **2011**, *77*, doi: 10.1128/AEM.01852-10.

(61) Park, Y.; Hua, G.; Abdullah, M. A.; Rahman, K.; Adang, M. J. Cadherin fragments from *Anopheles gambiae* synergize *Bacillus thuringiensis* Cry4Ba's toxicity against *Aedes aegypti* larvae. *Appl. Environ. Microbiol.* **2009**, *75*, 7280–7282.

(62) Pacheco, S.; Gomez, L.; Gill, S. S.; Bravo, A.; Soberon, M. Enhancement of insecticidal activity of *Bacillus thuringiensis* Cry1A toxins by fragments of a toxin-binding cadherin correlates with oligomer formation. *Peptides* **2009**, *30*, 583–588.

(63) Park, Y.; Abdullah, M. A.; Taylor, M. D.; Rahman, K.; Adang, M. J. Enhancement of *Bacillus thuringiensis* Cry3Aa and Cry3Bb toxicities to coleopteran larvae by a toxin-binding fragment of an insect cadherin. *Appl. Environ. Microbiol.* **2009**, *75*, 3086–3092.

(64) Bonin, A.; Paris, M.; Tetreau, G.; David, J. P.; Despres, L. Candidate genes revealed by a genome scan for mosquito resistance to a bacterial insecticide: sequence and gene expression variations. *BMC Genomics* **2009**, *10*, 551.

(65) Wirth, M. C.; Georghiou, G. P.; Federici, B. A. CytA enables CryIV endotoxins of *Bacillus thuringiensis* to overcome high levels of CryIV resistance in the mosquito, *Culex quinquefasciatus*. *Proc. Natl. Acad. Sci. U.S.A.* **1997**, *94*, 10536–10540.

(66) Perez, C.; Fernandez, L. E.; Sun, J.; Folch, J. L.; Gill, S. S.; Soberon, M.; Bravo, A. *Bacillus thuringiensis* subsp. *israelensis* Cyt1Aa synergizes Cry11Aa toxin by functioning as a membrane-bound receptor. *Proc. Natl. Acad. Sci. U.S.A.* **2005**, *102*, 18303–18308.

(67) Nielsen-Leroux, C.; Charles, J. F.; Thiery, L.; Georghiou, G. P. Resistance in a laboratory population of *Culex quinquefasciatus* (Diptera: Culicidae) to *Bacillus sphaericus* binary toxin is due to a change in the receptor on midgut brush-border membranes. *Eur. J. Biochem.* **1995**, *228*, 206–210.

(68) Rao, D. R.; Mani, T. R.; Rajendran, R.; Joseph, A. S.; Gajanana, A.; Reuben, R. Development of a high level of resistance to *Bacillus sphaericus* in a field population of *Culex quinquefasciatus* from Kochi, India. *J. Am. Mosq. Control Assoc.* **1995**, *11*, 1–5.

(69) Silva-Filha, M. H.; Nielsen-LeRoux, C.; Charles, J. F. Identification of the receptor for crystal toxin in the brush border membrane of the mosquito *Culex pipiens* (Diptera: Culicidae). *Insect Biochem. Mol. Biol.* **1999**, *29*, 711–721.

(70) Fernandez, L. E.; Martinez-Anaya, C.; Lira, E.; Chen, J.; Evans, A.; Hernandez-Martinez, S.; Lanz-Mendoza, H.; Bravo, A.; Gill, S. S.; Soberon, M. Cloning and epitope mapping of Cry11Aa-binding sites in the Cry11Aa-receptor alkaline phosphatase from *Aedes aegypti*. *Biochemistry* **2009**, *48*, 8899–8907.

(71) Hua, G.; Zhang, R.; Bayyareddy, K.; Adang, M. J. *Anopheles gambiae* alkaline phosphatase is a functional receptor of *Bacillus thuringiensis* *jegathesan* Cry11Ba toxin. *Biochemistry* **2009**, *48*, 9785–9793.

(72) Sarkar, A.; Hess, D.; Mondal, H. A.; Banerjee, S.; Sharma, H. C.; Das, S. Homodimeric alkaline phosphatase located at *Helicoverpa armigera* midgut, a putative receptor of Cry1Ac contains  $\alpha$ -GalNAc in terminal glycan structure as interactive epitope. *J. Proteome Res.* **2009**, *8* (4), 1838–1848.

(73) Krieger, I. V.; Revina, L. P.; Kostina, L. I.; Buzdin, A. A.; Zalunin, I. A.; Chestukhina, G. G.; Stepanov, V. M. Membrane proteins of *Aedes aegypti* larvae bind toxins Cry4B and Cry11A of *Bacillus thuringiensis* ssp. *israelensis*. *Biochemistry (Moscow)* **1999**, *64*, 1163–1168.

(74) Buzdin, A. A.; Revina, L. P.; Kostina, L. I.; Zalunin, I. A.; Chestukhina, G. G. Interaction of 65- and 62-kD proteins from the apical membranes of the *Aedes aegypti* larvae midgut epithelium with Cry4B and Cry11A endotoxins of *Bacillus thuringiensis*. *Biochemistry (Moscow)* **2002**, *67*, 540–546.

(75) Wang, P.; Zhang, X.; Zhang, J. Molecular characterization of four midgut aminopeptidase N isozymes from the cabbage looper, *Trichoplusia ni*. *Insect Biochem. Mol. Biol.* **2005**, *35*, 611–620.

(76) Atsumi, S.; Mizuno, E.; Hara, H.; Nakanishi, K.; Kitami, M.; Miura, N.; Tabunoki, H.; Watanabe, A.; Sato, R. Location of the *Bombyx mori* aminopeptidase N type 1 binding site on *Bacillus thuringiensis* Cry1Aa toxin. *Appl. Environ. Microbiol.* **2005**, *71*, 3966–3977.

(77) Banks, D. J.; Jurat-Fuentes, J. L.; Dean, D. H.; Adang, M. J. *Bacillus thuringiensis* Cry1Ac and Cry1Fa  $\delta$ -endotoxin binding to a novel 110 kDa aminopeptidase in *Heliothis virescens* is not N-acetylgalactosamine mediated. *Insect Biochem. Mol. Biol.* **2001**, *31*, 909–918.

(78) Crava, C. M.; Bel, Y.; Lee, S. F.; Manachini, B.; Heckel, D. G.; Escriche, B. Study of the aminopeptidase N gene family in the lepidopterans *Ostrinia nubilalis* (Hubner) and *Bombyx mori* (L.): sequences, mapping and expression. *Insect Biochem. Mol. Biol.* **2010**, *40*, 506–515.

(79) Hua, G.; Tsukamoto, K.; Rasilo, M. L.; Ikezawa, H. Molecular cloning of a GPI-anchored aminopeptidase N from *Bombyx mori* midgut: a putative receptor for *Bacillus thuringiensis* Cry1A toxin. *Gene* **1998**, *214*, 177–185.

(80) Knight, P. J.; Carroll, J.; Ellar, D. J. Analysis of glycan structures on the 120 kDa aminopeptidase N of *Manduca sexta* and their interactions with *Bacillus thuringiensis* Cry1Ac toxin. *Insect Biochem. Mol. Biol.* **2004**, *34*, 101–112.

(81) Lee, M. K.; You, T. H.; Young, B. A.; Cottrill, J. A.; Valaitis, A. P.; Dean, D. H. Aminopeptidase N purified from gypsy moth brush border membrane vesicles is a specific receptor for *Bacillus thuringiensis* Cry1Ac toxin. *Appl. Environ. Microbiol.* **1996**, *62*, 2845–2849.

(82) Luo, K.; Sangadala, S.; Masson, L.; Mazza, A.; Brousseau, R.; Adang, M. J. The *Heliothis virescens* 170 kDa aminopeptidase functions as “receptor A” by mediating specific *Bacillus thuringiensis* Cry1A  $\delta$ -endotoxin binding and pore formation. *Insect Biochem. Mol. Biol.* **1997**, *27*, 735–743.

(83) Nakanishi, K.; Yaoi, K.; Nagino, Y.; Hara, H.; Kitami, M.; Atsumi, S.; Miura, N.; Sato, R. Aminopeptidase N isoforms from the midgut of *Bombyx mori* and *Plutella xylostella* — their classification and the factors that determine their binding specificity to *Bacillus thuringiensis* Cry1A toxin. *FEBS Lett.* **2002**, *519*, 215–220.

(84) Zhang, S.; Cheng, H.; Gao, Y.; Wang, G.; Liang, G.; Wu, K. Mutation of an aminopeptidase N gene is associated with *Helicoverpa armigera* resistance to *Bacillus thuringiensis* Cry1Ac toxin. *Insect Biochem. Mol. Biol.* **2009**, *39*, 421–429.

(85) de Maagd, R. A.; Bakker, P. L.; Masson, L.; Adang, M. J.; Sangadala, S.; Stiekema, W.; Bosch, D. Domain III of the *Bacillus thuringiensis*  $\delta$ -endotoxin Cry1Ac is involved in binding to *Manduca sexta* brush border membranes and to its purified aminopeptidase N. *Mol. Microbiol.* **1999**, *31*, 463–471.

(86) Singh, A.; Sivaprasad, C. Functional interpretation of APN receptor from *M. sexta* using a molecular model. *Bioinformatics* **2009**, *3*, 321–325.

(87) Jenkins, J. L.; Lee, M. K.; Valaitis, A. P.; Curtiss, A.; Dean, D. H. Bivalent sequential binding model of a *Bacillus thuringiensis* toxin to gypsy moth aminopeptidase N receptor. *J. Biol. Chem.* **2000**, *275*, 14423–14431.

(88) Burton, S. L.; Ellar, D. J.; Li, J.; Derbyshire, D. J. N-Acetylgalactosamine on the putative insect receptor aminopeptidase N is recognised by a site on the domain III lectin-like fold of a *Bacillus thuringiensis* insecticidal toxin. *J. Mol. Biol.* **1999**, *287*, 1011–1022.

(89) Masson, L.; Lu, Y. J.; Mazza, A.; Brousseau, R.; Adang, M. J. The Cry1A(c) receptor purified from *Manduca sexta* displays multiple specificities. *J. Biol. Chem.* **1995**, *270*, 20309–20315.

(90) Abdullah, M. A.; Valaitis, A. P.; Dean, D. H. Identification of a *Bacillus thuringiensis* Cry11Ba toxin-binding aminopeptidase from the mosquito, *Anopheles quadrimaculatus*. *BMC Biochem.* **2006**, *7*, 16.

(91) Zhang, R.; Hua, G.; Andacht, T. M.; Adang, M. J. A 106-kDa aminopeptidase is a putative receptor for *Bacillus thuringiensis* Cry11Ba toxin in the mosquito *Anopheles gambiae*. *Biochemistry* **2008**, *47*, 11263–11272.

(92) Yaoi, K.; Nakanishi, K.; Kadotani, T.; Imamura, M.; Koizumi, N.; Iwahana, H.; Sato, R. *Bacillus thuringiensis* Cry1Aa toxin-binding region of *Bombyx mori* aminopeptidase N. *FEBS Lett.* **1999**, *463*, 221–224.

(93) Angsuthanasombat, C.; Crickmore, N.; Ellar, D. J. Comparison of *Bacillus thuringiensis* subsp. *israelensis* CryIVA and CryIVB

cloned toxins reveals synergism in vivo. *FEMS Microbiol. Lett.* **1992**, *73*, 63–68.

(94) de Barros Moreira Beltrao, H.; Silva-Filha, M. H. Interaction of *Bacillus thuringiensis* svar. *israelensis* Cry toxins with binding sites from *Aedes aegypti* (Diptera: Culicidae) larvae midgut. *FEMS Microbiol. Lett.* **2007**, *266*, 163–169.

(95) Delecluse, A.; Poncet, S.; Klier, A.; Rapoport, G. Expression of cryIVA and cryIVB genes, independently or in combination, in a crystal-negative strain of *Bacillus thuringiensis* subsp. *israelensis*. *Appl. Environ. Microbiol.* **1993**, *59*, 3922–3927.

(96) Delecluse, A.; Rosso, M. L.; Ragni, A. Cloning and expression of a novel toxin gene from *Bacillus thuringiensis* subsp. *jegathesan* encoding a highly mosquitocidal protein. *Appl. Environ. Microbiol.* **1995**, *61*, 4230–4235.